



Regional Climate Projections Consortium and Data Facility in Asia and the Pacific (RCCDF)

www.csiro.au

The project is being implemented by the Asian Development Bank through the technical assistance (TA 8359-REG) financed by the Japan Fund for Poverty Reduction.



Welcome to the workshop

- Brief introduction to the project
- What we hope to accomplish during the workshop
- Acknowledgements
- Questions

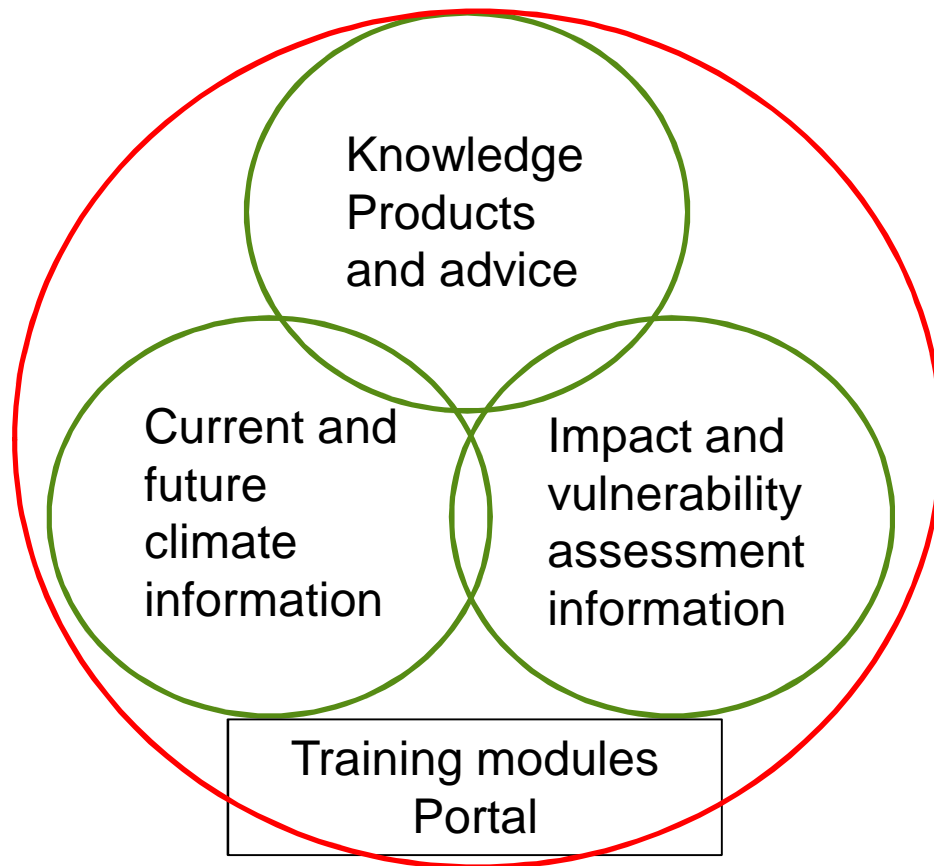
Using Climate Projections

It can be difficult to obtain, understand and use projections of climate change

- Projections are usually presented in very technical ways
 - Hard to interpret maps and graphs
 - Multiple data formats
- Often focussed on very large areas
 - Global or Continental
- Many different types of model results
 - Global, downscaled
 - How many projections should you use?
 - How do you choose what to use?

Vision statement

The Regional Climate Consortium will be the main provider of climate information for impact assessment in the Asia-Pacific Region



The **Consortium** will work with the **implementing agencies** to:

1. Adopt best practises
2. Increase capacity
3. Implement and support portal
4. Learn by doing
5. Collaborate across the region
6. Make the consortium sustainable

The Project Team



Implementing agencies

Philippine Atmospheric
Geophysical and
Astronomical Services
Administration (PAGASA)
Bureau of Meteorology,
Climatology and
Geophysics in Indonesia
(BMKG)
Thai Meteorological Department
(TMD)

Outputs

Sources of climate information

Guidance for assessing/using climate information

- Observational data
- Regional climate projections
- Dealing with uncertainty/range of possible futures

Guidance for climate impact and vulnerability assessment

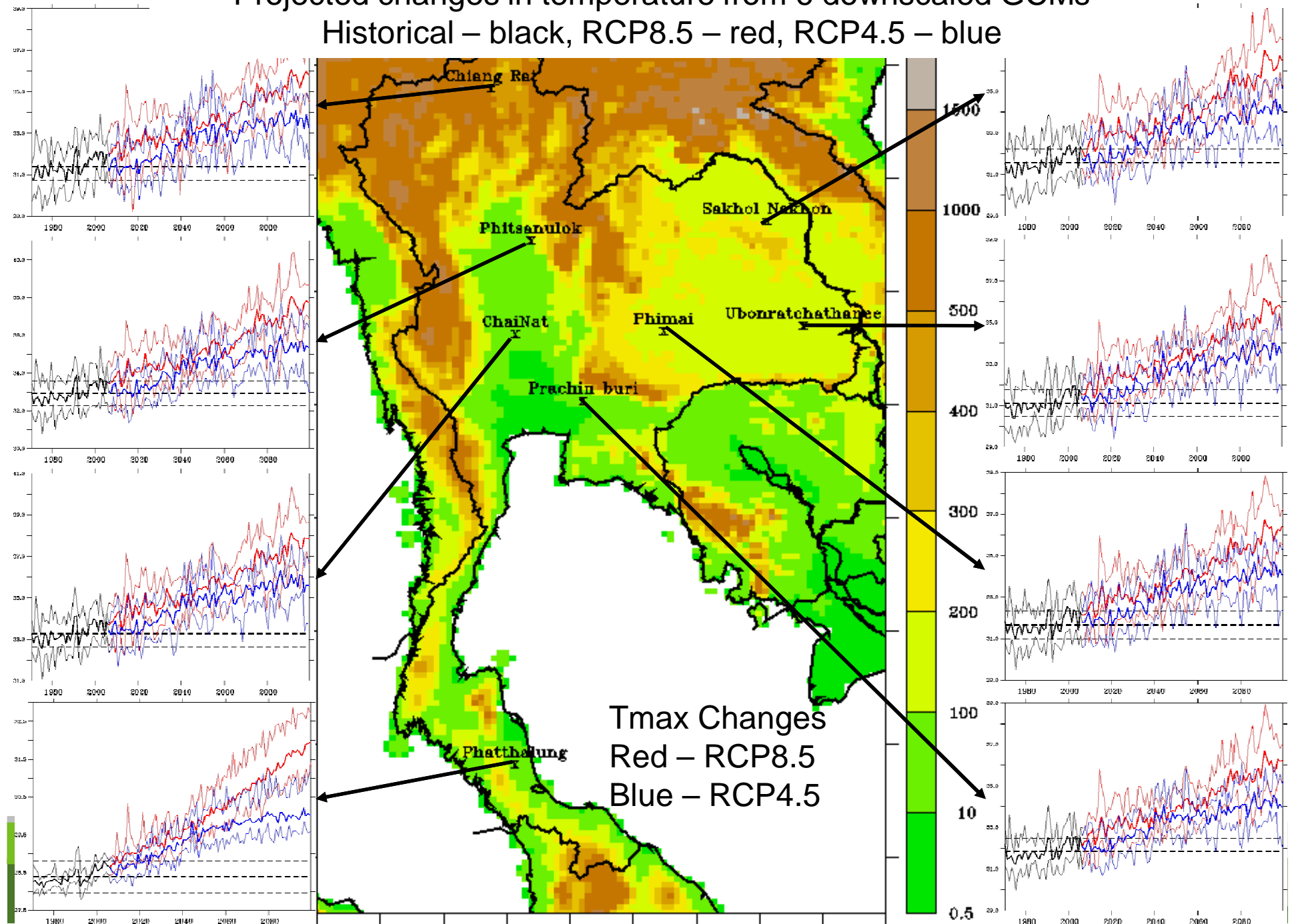
- How to deal with uncertainty in climate projections
- What to consider when completing an impact and vulnerability assessment

Knowledge products


- Above guidelines
- Training modules
- Case studies as examples
- Access to expert advice
- Portal

Projected changes in temperature from 6 downscaled GCMs

Historical – black, RCP8.5 – red, RCP4.5 – blue



Guide, Use and Collaborate.

[GET STARTED](#) 

The Regional Climate Projections Consortium and Data Facility (RCCDF) is a community of practice in the Asia-Pacific region with the objective to provide guidance on where to obtain and how to use climate information as well as guidance for the development of climate risk assessment and adaptation planning.

In establishing this online interface, the Consortium aims to enhance collaboration and knowledge sharing to support best practices in the region.

The Consortium is produced in conjunction with these partners:



Climate Science Guideline

Guidance and support on how to access and use climate science data for projection modelling.

Adapt to Climate Change

Assistance in how to perform a climate risks, impacts, adaptation and vulnerability assessment.

RCCDF Consortium

Find out more about the consortium services and how to participate and contribute.

[Latest Article](#)[Latest Submissions](#)[Latest News](#)

Goals of workshop

Present status of the project

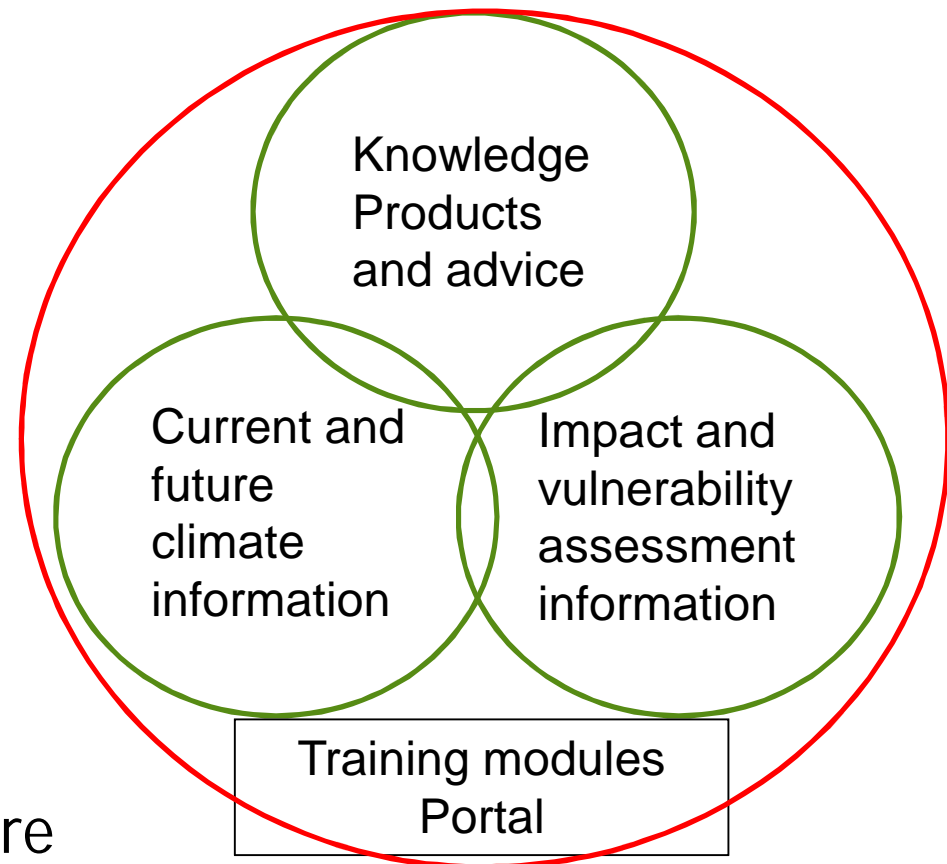
- Still work in progress
- Want your input!

Day 1:

- Stakeholder engagement
- Provide example through Thailand Case Study

Day 2-3:

- Working with Case Study in more detail
- Capacity building
- Refining knowledge products



Acknowledgements

Deputy Secretary General Ladawan Kumpa

Dr. Songkran Adsorn DDG of TMD

Dr. Kollawat Sakhakara of ONEP

Mr. Yasushi Negishi of ADB Thailand
Resident Mission.

Ms. Pailin Sangkhao

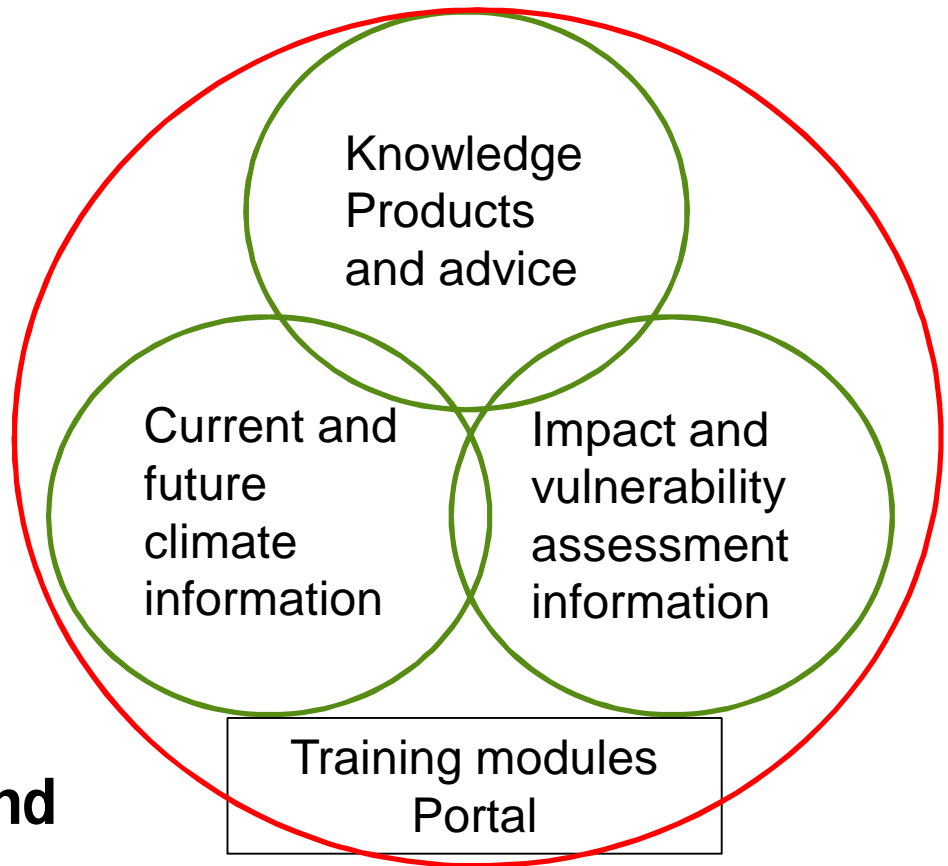
Boonlert Archevarahuprok

Attachai Jintrawet

Jerasorn Santisirisomboon

Ma. Aurora "Lou" Caluag

**Reminder: We want your input and
feedback**



Thank you! Questions?

FOR MORE INFORMATION CONTACT:

Dr Jack Katzfey

Team Leader Regional Climate
Variability and Extremes

Climate Variability, Extreme
Weather and Adaptation Group

CSIRO Oceans and Atmosphere Flagship

E jack.katzfey@csiro.au

T +61 3 9239 4562

PMB 1

107 Station St, Aspendale VIC
Australia 3195

Cinzia Losenno

Senior Climate Change Specialist
(Climate Change Adaptation)

Sustainable Development and
Climate Change Department
Asian Development Bank

E closenno@adb.org

T +63 2 632 4996

Regional Climate Projections Consortium and Data Facility for Asia and the Pacific

Use of climate services in Asia and the Pacific is challenged by limited reliable climate information, insufficient capacity to interpret and use climate information, and limited technical and financial resources.

The Regional Climate Projections Consortium and Data Facility (RCCDF) will develop a community of practice to provide this in a cost-effective and sustainable manner through capacity building. The RCCDF project¹ will address these challenges by providing:

1 Access to climate information.



2 Guidelines and examples for conducting impacts and vulnerability assessments.



3 Knowledge sharing and learning.



RCCDF GOALS:

- Adopt best practices for adaptation planning
- Support learning by doing
- Develop in-country capacity for using climate information in impacts and vulnerability assessments
- Implement and support the portal (an online resource with links to data and information)
- Increase collaboration on assessment of common regional climate impacts

THE RCCDF WILL PROVIDE ACCESS TO:

- Available current and future climate information
- Guidelines on how to develop, interpret and use climate information
- An online web interface (portal) to provide access to the guidelines, learning materials and other related services.

¹ The project is being implemented by the Asian Development Bank through the technical assistance for Regional Climate Projections Consortium and Data Facility in Asia and the Pacific (TA 8359-REG) financed by the Japan Fund for Poverty Reduction.